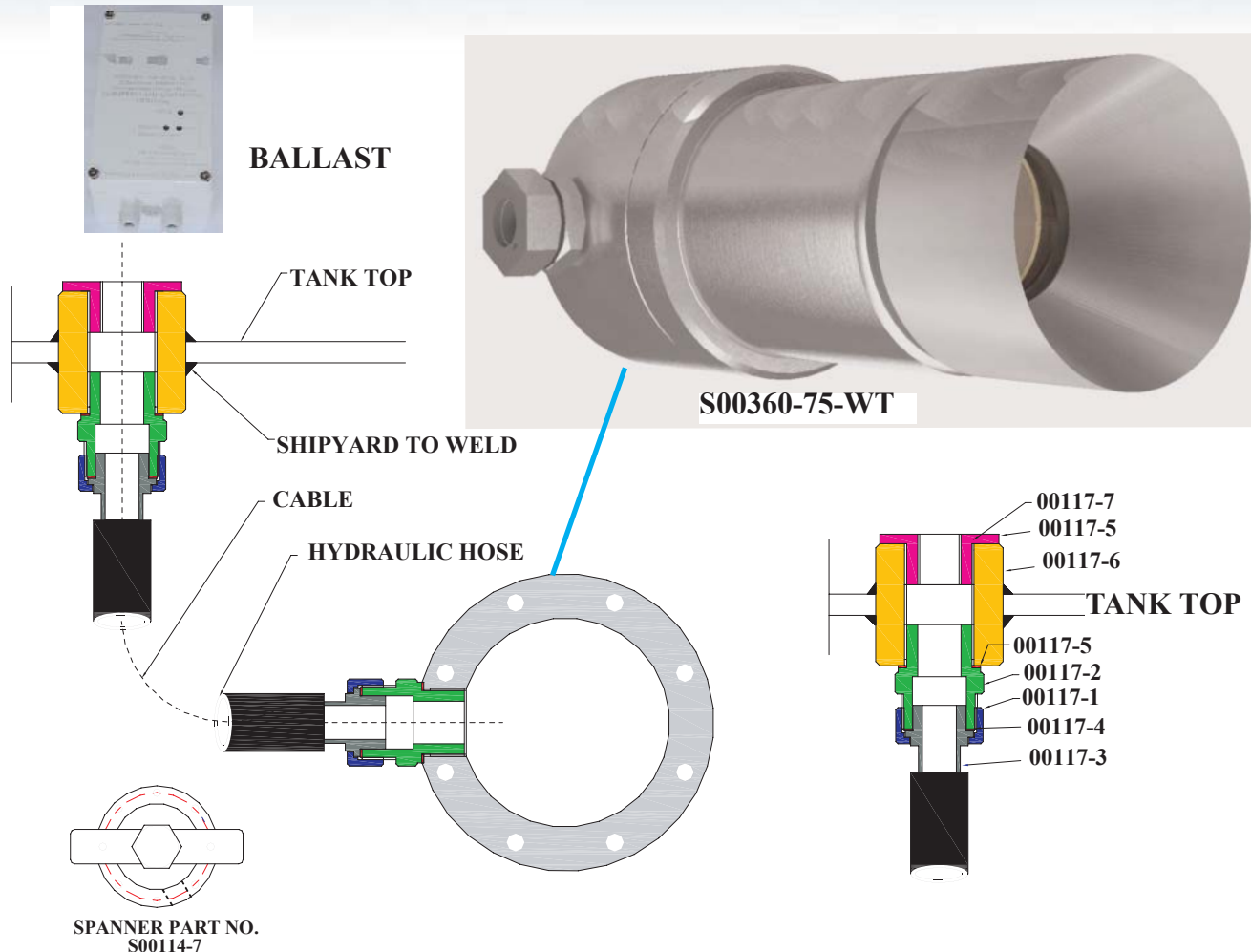


# UL Ti MATE 75 SA WATER TIGHT PROJECTOR - S00360-75-WT

underwater lights limited™

Manufacturers of the Original underwater lights™  
Brand Marine Lighting Products since 1991

## INSTALLATION FOR THE WATER TIGHT PROJECTOR (S00360-WT)



### NOTE-

The water tight projector for the **UL Ti MATE 75 SA** is manufactured from 316 S.S. It can house the **150 (W2)** and **250 (W1)** watt lamp/reflector adjustment assembly. Each water tight projector has the hydraulic connections fitted as shown in above photo. The remaining hydraulic parts are supplied separately with the projector- **00117-1 - 2 pcs, 00117-2 - 1pc, 0117-3 - 2 pcs, 00117-4 - 2pcs, 00117-6 - 1pc & 00117-7 - 1pc** The hydraulic hose is not supplied as standard as the length is unknown until the lights are fitted.

The projector is screwed onto the insert and can be tightened with a spanner (**S00114-WT**) which has to be ordered separately.

Part 00117-7 is an acetal plug with an M20 x 1,5 thread. This is for a cable gland.

For further information please contact us.